

Cultivating Thriving Futures

Head Start/EHS Annual Report
2014-2015



Greater
Lawrence
Community
Action
Council, Inc.

GLCAC

Creating Opportunities: Ending Poverty

Anne D'Errico
Head Start Director

Evelyn Friedman
GLCAC, Inc. Executive Director

William Buckley
GLCAC, Inc. Board of Directors President





The GLCAC, Inc. Head Start program provides quality comprehensive services to Greater

Lawrence's most vulnerable children and families through the passionate commitment of qualified professionals. At the core of our philosophy is the belief that children learn best in secure and nurturing environments and through the engagement of their families and the community. In addition to the award-winning educational instruction, the GLCAC, Inc. Head start and Early Head Start program offers services and family development opportunities in the areas of physical, mental, and oral health, and family support services that include workforce development and promotion of civic engagement.

...“The Administration for Children and Families (ACF) conducted a monitoring review of the Greater Lawrence Community Action Council, Inc. Head Start and Early Head Start programs...”

“Based on the information gathered, no area of noncompliance was found during the course of review.”

-Result of Federal Review conducted April 2014



Natural playgrounds engage the children's imagination and sense of wonder. The Casa Roja center playground, with its subterranean tunnel, is pictured here.

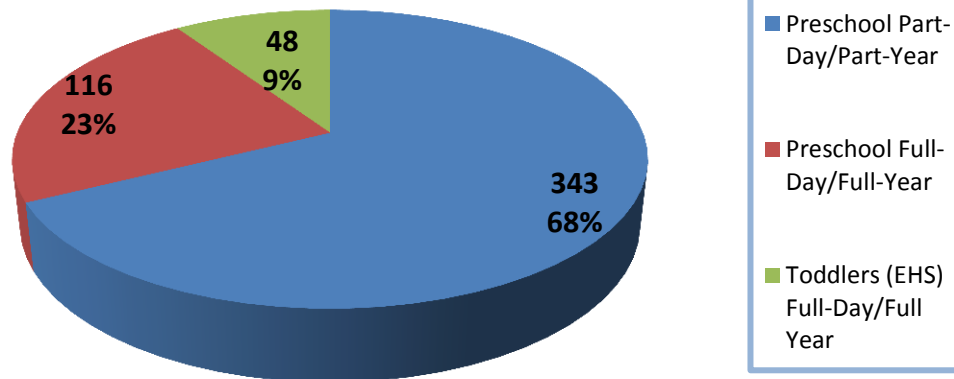
HEAD START HEAD START/EHS FUNDED ENROLLMENT 2015



Our program receives funding to provide services to **459 preschool children and 48 toddlers**, all in the **Center-Based** option.

"I love what Head Start does for Aiden. It builds his confidence and teaches him skills and how to interact with his peers." – Trista Joy, Parent at Methuen Center

Funded Enrollment 2014-2015



343

- Preschool children receive services part-day/part-year

116

- Preschool children receive services full-day/full-year

48

- Toddlers receive services full-day/full-year

TOTAL NUMBER OF CHILDREN AND FAMILIES SERVED: HEAD START- 626; EHS- 130

AVERAGE MONTHLY ENROLLMENT (AS A PERCENTAGE OF FUNDED ENROLLMENT): 102%

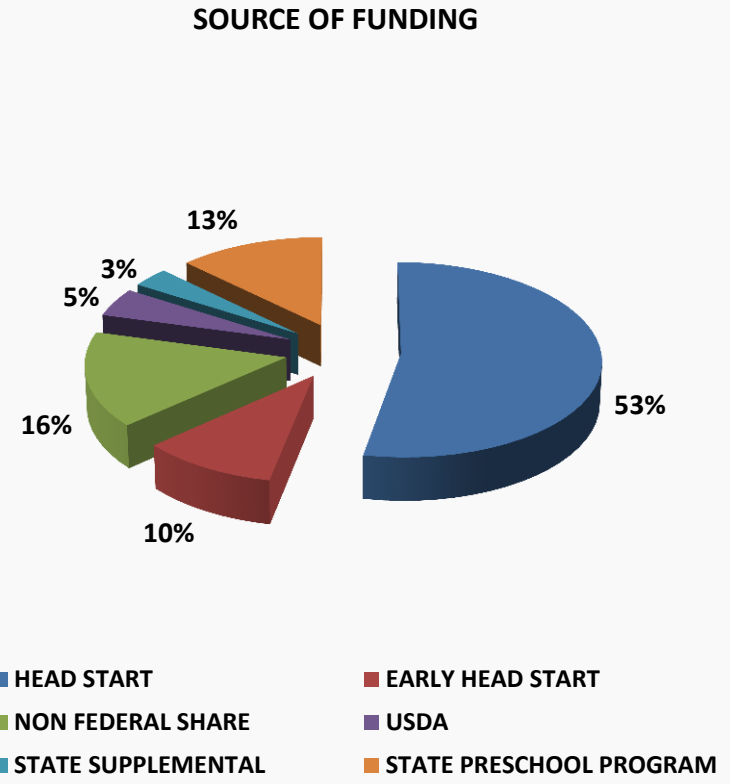
During June, July and August, not all options are in session. Early Head Start operates Full-Day/Full Year; Head Start serves limited Full-Day/Full Year slots through State Funded vouchers.



FISCAL YEAR 2014 – 2015

FUNDING SOURCES FOR FISCAL YEAR MAY 2014 – APRIL 2015

DEPARTMENT OF HEALTH AND HUMAN SERVICES/ADMINISTRATION FOR CHILDREN & FAMILIES	
HEAD START FUNDS	\$ 4,055,291
TRAINING AND TECHNICAL ASSISTANCE	\$ 42,370
EARLY HEAD START FUNDS	\$ 777,984
TRAINING AND TECHNICAL ASSISTANCE	\$ 14,135
TOTAL FEDERAL FUNDING	\$ 4,889,780
HEAD START NON-FEDERAL RESOURCES	\$ 1,024,415
EARLY HEAD START NON-FEDERAL RESOURCES	\$ 195,534
USDA (OCT 2014-SEPT 2015)	\$ 366,910



MASSACHUSETTS DEPARTMENT OF EARLY EDUCATION & CARE 7/2014-6/2015	
STATE SUPPLEMENTAL	\$ 253,443
STATE PRESCHOOL PROGRAM	\$ 984,000
TOTAL STATE FUNDING	\$1,237,443



HEAD START BUDGETARY EXPENSES

MAY 1, 2014 – APRIL 30, 2015

PERSONNEL	\$ 2,011,301
FRINGE BENEFITS + PAYROLL TAXES	\$ 815,736
TRAVEL	\$ 6,300
TRAINING/PROFESSIONAL DEVELOPMENT	\$ 42,370
SUPPLIES	\$ 130,367
CONTRACTUAL	\$ 106,800
OTHER**	\$ 525,277
INDIRECT COSTS	\$ 459,510
TOTAL	\$ 4,097,661



EARLY HEAD START BUDGETARY EXPENSES

MAY 1, 2014 – APRIL 30, 2015

PERSONNEL	\$ 483,488
FRINGE BENEFITS + PAYROLL TAXES	\$ 132,850
TRAINING/PROFESSIONAL DEVELOPMENT	\$ 14,135
SUPPLIES	\$ 23,580
CONTRACTUAL	\$ 2,634
OTHER**	\$ 47,419
INDIRECT COSTS	\$ 88,013
TOTAL	\$ 792,119

Our staff, which also reflects the Greater Lawrence community, is at the foundation of our program. Our budgetary priorities include providing fair compensation and opportunities for Professional Development to continue providing quality services to our families.

** Other expenses consist of Mortgage; Rent; Utilities; Insurance; Building Maintenance and Repairs; Vehicle Maintenance; Outreach/Printing; and other operating costs.



FISCAL YEAR 2015-2016



APPROVED BUDGET FOR FISCAL YEAR 2015-2016 – HEAD START PROGRAM		APPROVED BUDGET FOR FISCAL YEAR 2015-2016 – EARLY HEAD START PROGRAM	
PERSONNEL	\$ 2,069,521	PERSONNEL	\$ 424,210
FRINGE BENEFITS	\$ 821,522	FRINGE BENEFITS	\$ 150,715
TRAVEL	\$ 3,000	SUPPLIES	\$ 29,270
SUPPLIES	\$ 119,352	CONTRACTUAL	\$ 39,140
CONTRACTUAL	\$ 68,860	OTHER	\$ 46,636
OTHER	\$ 513,526	INDIRECT COSTS	\$ 88,013
INDIRECT COSTS	\$ 459,510	TRAINING AND TECHNICAL ASSISTANCE	\$ 14,135
TRAINING AND TECHNICAL ASSISTANCE	\$ 42,370		
TOTAL FEDERAL FUNDING	\$ 4,097,661	TOTAL FEDERAL FUNDING	\$ 792,119
TOTAL NON-FEDERAL SHARE	\$ 1,024,416	TOTAL NON-FEDERAL SHARE	\$ 198,030
TOTAL FUNDING	\$5,122,077	TOTAL FUNDING	\$ 990,149

HIGH QUALITY COMPREHENSIVE SERVICES



Healthy Children are ready to Learn!



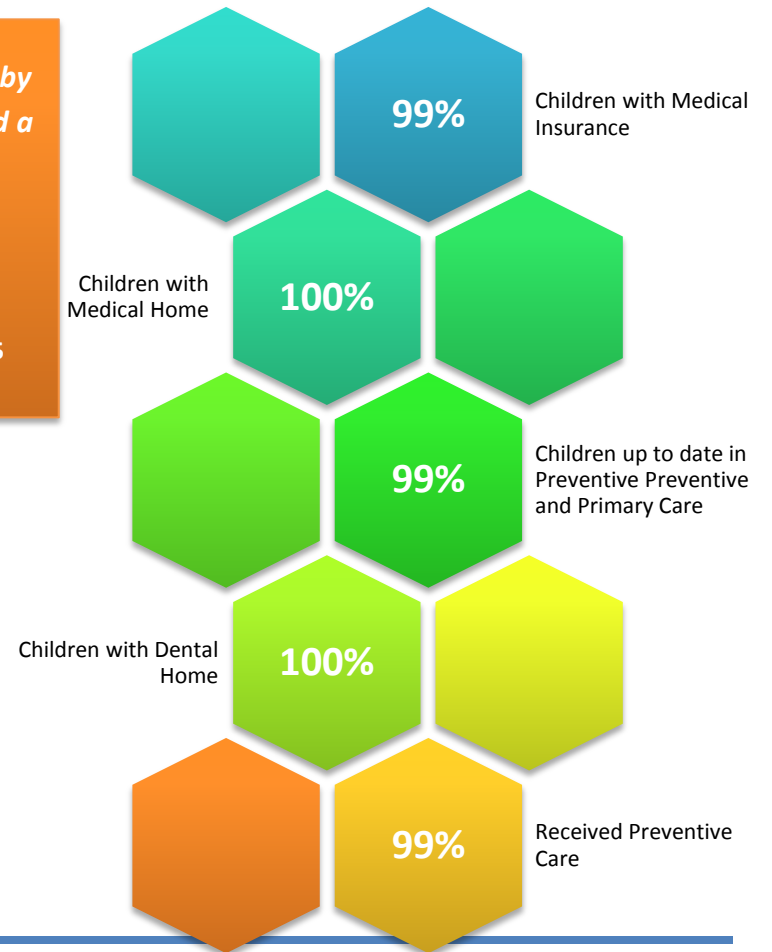
Jahayra Michel-Smith –
Head Start Parent and Policy Council Member

*Mental Health services offered on site by
Licensed Mental Health Consultant and a
full-time Family Development
Coordinator*

LMHC on-site hours: 10

Number of mental health consultations: 95

*“I am so appreciative for my daughter
having her eyes tested. If it wasn’t for
the nurse I never would have known
that she needed glasses.” – Marisol
Torres, Parent at Park St. Center*



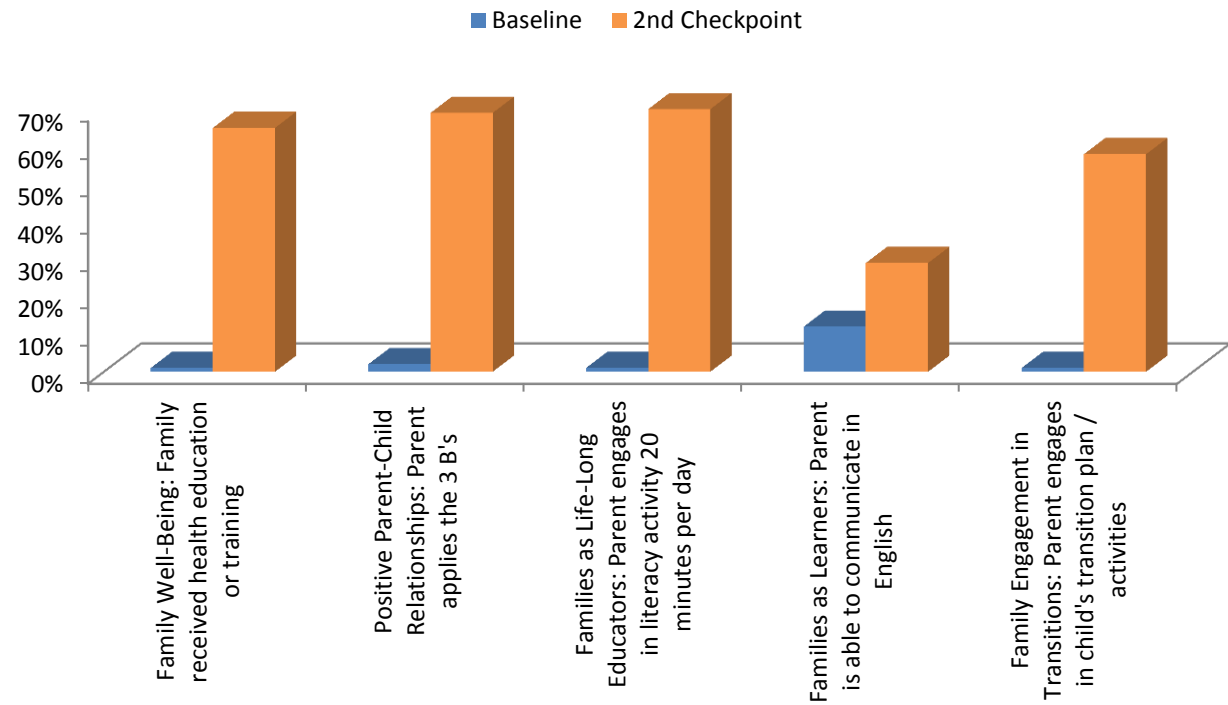
FAMILY ENGAGEMENT AT THE CORE OF SCHOOL READINESS

FAMILY SUPPORT AND PARENT ENGAGEMENT

Our parent engagement model empowers the family to pursue personal and professional development to promote family stability, in addition to preparing their young children for school readiness.



"Thanks to you I am now working [at] Head Start and I know more English than I used to know." – Freddy Perez, Head Start parent and employee, to ESOL Teacher

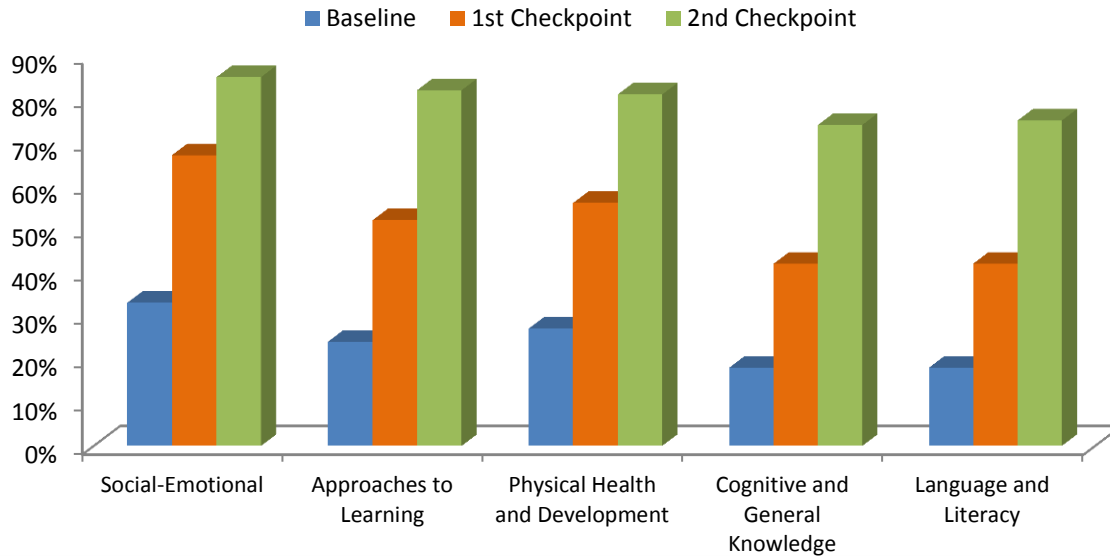


Families grow and learn together!



SCHOOL READINESS – KINDERGARTEN READINESS

GLCAC, Inc. Head Start measures, tracks, and monitors the learning and development of children in the program to ensure individualized instruction and goal setting for children 15 months to age 5; to guide curriculum development; to improve student outcomes; develop children’s continued curiosity for learning; and, to ensure children’s successful transitions from Early Head Start to the Head Start Program and from the Head Start Program to Kindergarten.



Getting Ahead with Kindergarten Readiness

GLCAC, Inc. Head Start prepares children for successful Kindergarten transitions by aligning preschool and Kindergarten practices, standards and curricula as an important element for promoting seamless transitions. In addition to ensuring children have mastered the necessary academic and social skills, smooth transitions from preschool to Kindergarten depend on connections made between participants in the process, such as those between schools and families, and between administrators and principals, especially connections made prior to kindergarten entry. Six months prior to entering Kindergarten, children work in small groups with one teacher assuring their mastery in different concepts. Parents are provided with monthly school readiness activities based on the essential domains. Each year the preschool children and families along with their preschool teachers take a tour of the public schools, where the children meet the principal, teachers, and tour the classrooms, library, cafeterias and playgrounds.

Learning IS FUN!